



CONGREGATE

PRODUCT SHEET

Innovative data collection and visualisation for any budget

Discover how Congregate can streamline your crowdsourcing projects and enable them to realise their full potential.

OVERVIEW

Congregate is the all-in-one platform for running environmental crowdsourcing projects.

As the challenges facing our environment continue to grow, more people are looking for ways to drive distinct change. Crowd sourcing and citizen science is a great way in which they can be part of the solution.

Crowdsourcing data collection can benefit any size of organisation, dramatically increasing the scale on which they can gather data. Available as an intuitive, web-based platform, Congregate is accessible and user-friendly for all.

Congregate allows you to effectively coordinate projects, manage data collection teams, and explore results with industry-leading visualisation tools.

Whether you are managing your own data collection team or recruiting volunteers, Congregate will make sure you get the most from your crowdsourcing project.

FEATURES

- Easily organise events, encourage participants to sign-up, distribute measurement equipment, and check results in a single platform.
- Customisable data entry forms allow you to gather the data important to you and your project.
- Straightforward design with interactive tutorials ensures that you can start benefiting from the platform straight away.
- Fast and responsive user interfaces suitable for viewing on any computer or mobile platform.

BENEFITS

- Maximise the potential of your data with powerful visualisation. Including maps, charts, tables and photographs, helping you to make informed decisions.
- Expand and create new data collection projects by optimising efficiency, and get greater data coverage and frequency for a lower budget.
- Raise awareness of the issues that matter to you. Host data publicly in a format that's engaging and easy to understand

CONGREGATE IN ACTION

Bristol Avon Rivers Trust: RiverBlitz

The Bristol Avon Rivers Trust (BART) has been running its RiverBlitz citizen science project since 2016. This project aims to encourage members of the public to engage with their local waterways, whilst at the same time collecting valuable data on river health in their catchment.

In 2020, BART sought to expand this project significantly, raising its public profile and increasing the number of volunteers taking part. The Congregate platform allowed BART to achieve this by providing a streamlined interface where the volunteers could register and enter their results. Using this platform BART's team were able to see who had registered, manage the distribution of their water sampling kits, and check the results once they had been recorded.

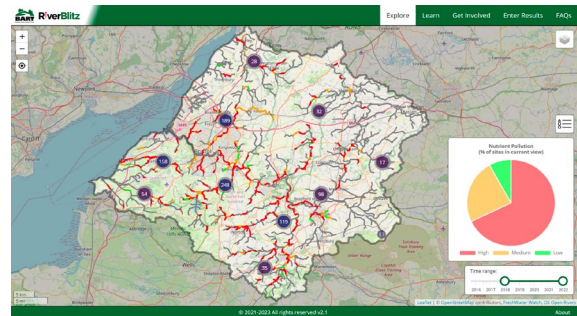
The results gathered by BART's volunteers were displayed publicly through the Congregate platform, which could visualise the data simply and clearly. As a result, BART could better target their conservation efforts, increasing the awareness and visibility of challenges impacting rivers by making vital data accessible. The site was integrated into BART's website and customised to include the project's branding.

See the RiverBlitz platform in action:

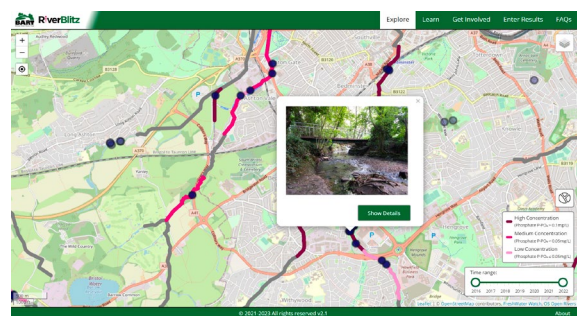
bristolavonriverstrust.org/riverblitz

ABOUT RISKWARE

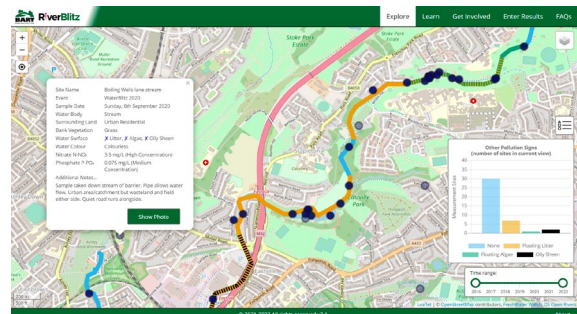
Riskaware is a leading incident modelling solutions provider. With over 20 years of experience working with global government departments and science-led R&D partners, we deliver actionable insight into environmental, human and security challenges worldwide. Our scalable data visualisation and modelling platform solutions offer superior situational awareness and critical decision support to governments, commercial organisations and NGOs.



BART source data across their whole catchment



Visualising the data recorded by BART Volunteers



Volunteers collect a wide range of river data

The screenshot shows a form for recording plant life data. The form asks if there is any in-stream vegetation and provides options for different types of vegetation. It also asks if there are any invasive plants in the channel or on the banks.

Volunteers register and enter data through the platform

For more information or to discuss how we can work together, please contact us on:

Email
info@riskaware.co.uk

Phone
+44 (0) 117 929 1058

Whitefriars
Lewins Mead
Bristol
BS1 2NT

