

Environmental Software Consultancy

Riskaware has over 25 years of experience working with global government departments and science-led R&D partners, delivering actionable insight into environmental, human and security challenges worldwide.

Riskaware provides scalable data visualisation and modelling platform solutions which give superior situational awareness and critical decision support to governments, commercial organisations and NGOs.

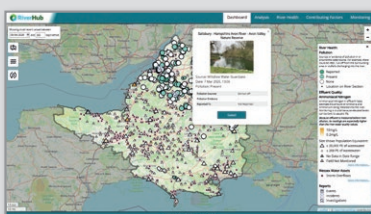
- Geospatial Information Systems (GIS)
- Advanced visualisation
- Scientific & mathematical modelling
- Satellite monitoring
- Evidence-based decision support
- Security & data integrity expertise
- Proven track record of delivery in the environmental sector
- ISO 9001 and Cyber Essentials Plus certified

RiverHub

RiverHub is an interactive online dashboard developed for Wessex Water, which brings together citizen science, professional monitoring, and live sensor data to help people explore, understand, and protect river health across the Wessex catchment.

The dashboard combines diverse datasets including water quality, ecology, pollution reports, and hydrological information, all in one place. RiverHub supports evidence-based decision-making for river restoration and management.

The RiverHub dashboard can be viewed at riverhub.co.uk

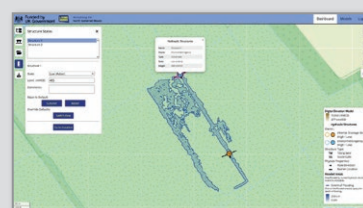


◀ RiverHub's web-based dashboard provides detailed insight into river health across the Wessex region

Living Moors Water Level Visualiser

The Water Level Visualiser was developed for North Somerset Council as an accessible resource to help stakeholders better understand water management across the North Somerset Moors.

By simulating the impact of structures like weirs and sluice gates, the tool provides a clear look at how changing water levels affect the local landscape, fostering transparency and public awareness around management decisions.



◀ Users can define the location and state of multiple hydraulic structures and visualise their impact on the map

Environmental Software Consultancy

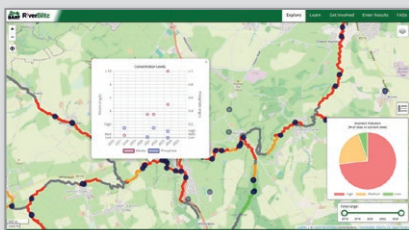
Bristol Avon RiverBlitz

Bristol Avon Rivers Trust (BART) has been running its Bristol Avon RiverBlitz citizen science project since 2016. The project encourages members of the public to engage with their local waterways, whilst collecting valuable data on the health of rivers in their catchment.

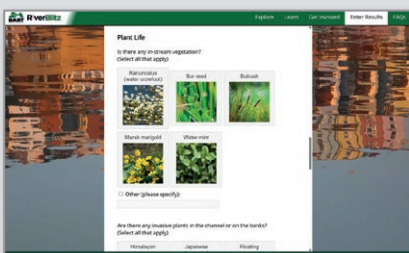
Our Congregate environmental crowdsourcing platform allows volunteers to register, upload their measurements and view their results. The platform also enables BART to coordinate the project, organising the sending out of test kits and checking the submitted results.

The public-facing part of the site can be viewed on the BART website:

bristolavonriverstrust.org/riverblitz



Measurements are projected on to the river pathways in the Data Explorer to allow comparison with nearby sites



The platform also manages volunteer registration, sample kit management, entry of results and data review

FSO Safer Risk Assessment

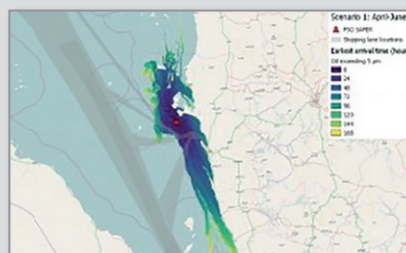
Riskaware conducted investigations on behalf of the UK's Foreign Commonwealth & Development Office (FCDO) into the threat posed by the FSO Safer while it was moored off the coast of Yemen.

Our team assessed the impact from worst case scenarios from an oil spill or fire onboard the vessel. The results were vital in raising awareness of the sheer scale of the environmental and humanitarian risk posed by the FSO Safer, which ultimately led to its safe disposal.

We drew on our extensive knowledge of both atmospheric and oil spill dispersion modelling to generate the results. Riskaware's work on the FSO Safer has been referenced at UN and US government meetings, as well in the media including Time Magazine, the New Yorker and on NBC.



Atmospheric modelling showed the impact of smoke from a fire onboard the FSO Safer to human activities



Stochastic modelling of oil spill scenarios showed the areas most likely to be affected depending on the season



For more information or to discuss how we can work together, please contact us on:

Email info@riskaware.co.uk
Phone +44 (0) 117 929 1058

Whitefriars, Lewins Mead, Bristol BS1 2NT



Part of  Evallic

Riskaware | riskaware.co.uk